



Product Data Sheet

Argosy Krone Range

Krone 237A Range



Krone 237A Block Cream Disconnect Module
Each pair is normalised via a set of contacts which can be broken if required. SKU ref: **FE-10-003**

Krone 237A Block Blue Disconnect Module
Each pair is normalised via a set of contacts which can be broken if required. SKU ref: **FE-06-001**



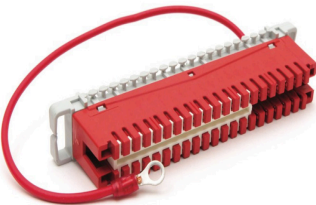
Krone 237B Range



Krone 237B Grey Punch Connection Module
Each pair consists of a one piece conductor to provide a permanent link between connectors. SKU ref: **FE-08-001**

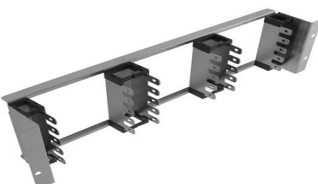


Krone 237D Red Earth Block



All 76 connection points are bussed together and connected to a drain wire terminated in a eyelet for bonding to a suitable grounding point. SKU ref: **FE-02-001**

Sub Rack



Our range of 19" subracks allows 10 pair IDC strips to be fitted to any standard 19" rack.
3U Recessed Sub rack, SKU ref: **FT-59-002**,
4U Recessed Sub rack, SKU ref: **FT-59-007**
3U Flat Sub rack, SKU ref: **FT-59-009**, 4U Flat Subrack, SKU ref: **FT-59-006**



Product Data Sheet

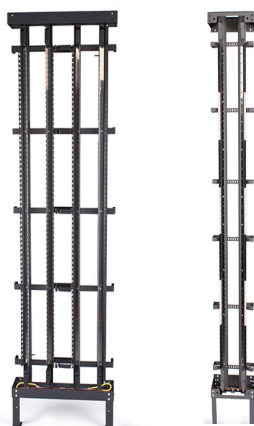
Argosy Krone Range

A2 Krone Type Insertion Tool



Handheld punch-down tool for Krone style connections. This tool will assure that the correct pressure is applied to the wire and both the blades ensuring a quality connection. SKU ref: **MG-99-004**

Distribution Frame



City 80 is two vertical, modular distribution frame with capacity of 1600 pairs 10 pairs per strips connection 237A. Can be assembled side-by-side for wall mounting, or back-to-back for free-standing applications, cable management and earthing provided.

Frame Distribution 108A-1V is a single vertical, modular distribution frame with capacity of 690 pairs 10 pairs per strips connection 237A. Can be assembled side-by-side for wall mounting, or back-to-back for free-standing applications, cable management and earthing provided.

Frame Distribution 108A-2V is a two vertical, modular distribution frame with capacity of 1380 pairs 10 pairs per strips connection 237A. Can be assembled side-by-side for wall mounting, or back-to-back for free-standing applications, cable management and earthing provided.

Adjustable legs allow for uneven flooring, or may be removed where height is a limitation.

Product information

City 80,	2V	FT-00-006
108A,	1V	FT-00-007
108A,	2V	FT-00-005

All information correct at the time of writing. Specifications subject to change without notice.