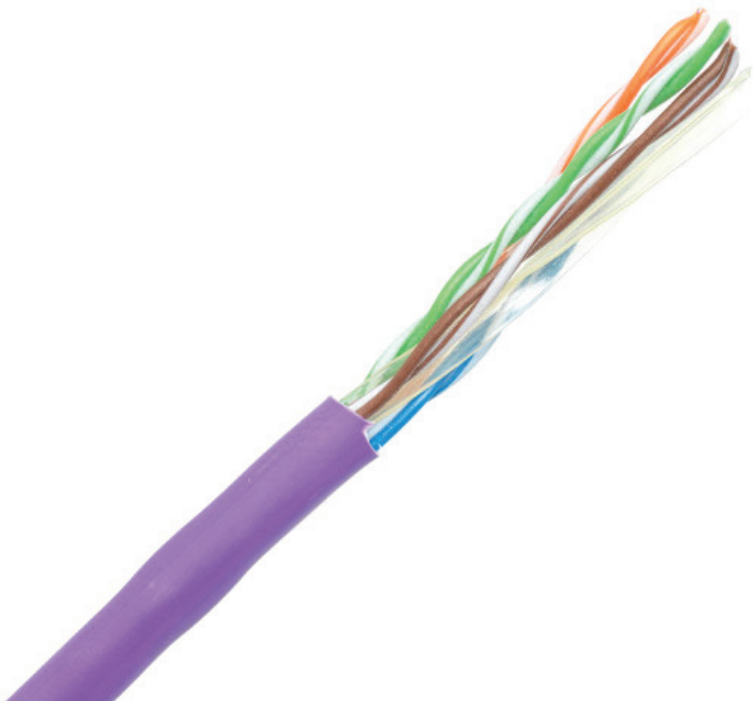




Product Data Sheet

Belden CAT 6 Solid UTP LSOH - Violet

Description



Fast becoming the cable of choice for many structured cabling networks, Cat 6 Solid UTP LSOH features four unshielded twisted pairs and no outer shielding. Designed for use in next-generation data communications networks (specifically Class Ea), it enables extremely high data rate transmission of up to 10Gbps at a frequency of 500MHz.

CAT6A cable is a 23AWG solid conductor copper cable in a low smoke, zero halogen sheath. It fully supports 10BASE-T up to 100 metres in channel length, ensuring that it can support the fastest Ethernet applications. Also suitable for 100BASE-TX (Fast Ethernet), 1000BASE-T/1000BASE-TX (Gigabit Ethernet).

It offers performance characteristics that exceed Cat 6 specifications and is recommended to be used in conjunction with our Cat 6 Modules and Patch Panels.

Available in 305m and 100m reel boxes, which are marked by meter for easy installation.

Product	SKU
BELDEN CAT 6 SOLID UTP LSOH - VIOLET	EA-07-6113AV



Product Data Sheet

Belden CAT 6 Solid UTP LSOH - Violet

Technical Specification

Belden CAT 6 Solid UTP LSOH - Violet Specification

Conductor	Max. Mutual Capacitance: 56 pF/m (17 pF/ft)	
Element: Individual Pair	Max. Capacitance Unbalance: 160 pF/100m	
Size: 23 AWG	Nom. Characteristic Impedance: 100 Ohm	
Stranding: Solid	Delay	
Material: BC - Bare Copper	Max. Delay Skew: 40 ns/100m	
Number of Pairs: 4	Nom. Velocity of Prop.: 70%	
Number of Element: 8	High Frequency	
Insulation	Frequency [MHz]	Max. Insertion Loss (Attenuation)
Element: Individual Pair	1	-2.1 dB/100m
Material: PE - Polyethylene	4	3.8 dB/100m
Nom. Insulation Diameter: 0.96 mm (0.038 in)	10	6 dB/100m
Colour Code: White/Blue & Blue, White/Green & Green, White/Orange & Orange, White/Brown & Brown	16	7.6 dB/100m
Cable Core	20	8.5 dB/100m
Description: 4 pairs twisted together	31.2	10.7 dB/100m
Separator: Center Member (Patented X-Spline®)	62.5	15.5 dB/100m
Outer Jacket	100	19.9 dB/100m
Material: LSZH - Low Smoke Zero Halogen (Flame Retardant)	155	25.3 dB/100m
Nom. Diameter: 5.4 mm (0.21 in)	200	29.1 dB/100m
Overall Cable Diameter (Nominal): 5.4 mm (0.21 in)	250	33 dB/100m
Nom. Characteristic Impedance: 100 Ohm	Voltage	
Electricals	Voltage Rating: 72 V DC	
Max. Conductor DCR: 95 Ohm/km		



Product Data Sheet

Belden CAT 6 Solid UTP LSOH - Violet

Technical Specification

Belden CAT 6 Solid UTP LSOH - Violet Specification

Temperature	Standards and Compliance
Operating: -30°C to +60°C	Environmental Suitability: Indoor - Euroclass Eca
Installation: 0°C To +50°C	Flammability / Reaction to Fire: IEC 60332-1-2
Bend Radius	Element: Individual Pair
Stationary Min.: 23 mm (0.91 in)	CPR Compliance: CPR Euroclass: Eca; CPR UKCA Class: Eca
Installation Min.: 46 mm	IEEE Compliance: PoE: IEEE 802.3bt Type 1, Type 2, Type 3, Type 4
Max. Pull Tension: 80 N (18 lbf)	Data Category: Category 6
Bulk Cable Weight: 37 kg/km	TIA/EIA Compliance: ANSI/TIA 568.2-D
	ISO/IEC Compliance: ISO/IEC 11801-1, IEC 61034-2 - Smoke Density Min Transmittance = 60%
	CENELEC Compliance: EN 50173-1, Segregation class according EN50174-2 = a
	European Directive Compliance: EU CE Mark
	UK Regulation Compliance: UKCA Mark