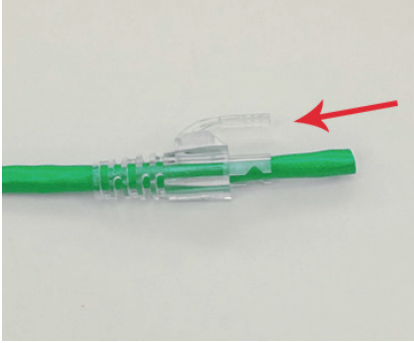




# Termination Instructions

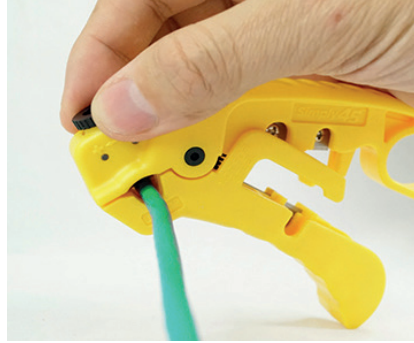
PN: FA-05-9005

## STEP 1



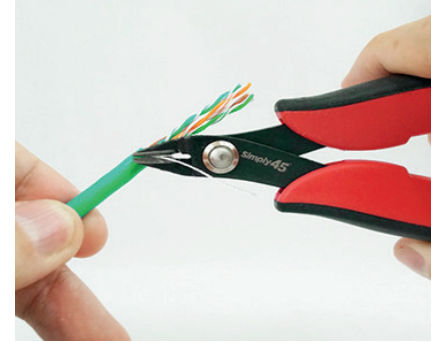
If using strain relief/boot, insert the boot onto the cable as shown.

## STEP 2



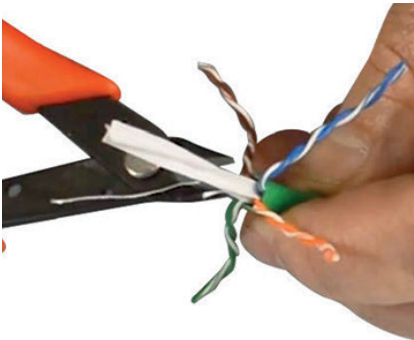
Using the Adjustable Cable Stripper (Part No: MC-99-9950), strip back the cable jacket about 1.5 inches (3.8cm).

## STEP 3



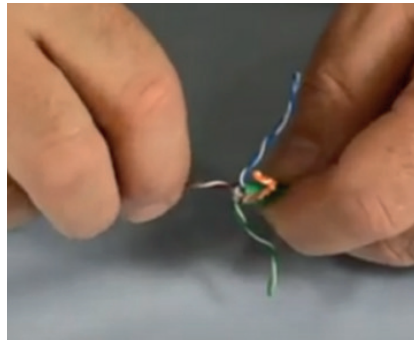
Trim off the "rip cord" at the cable jacket using Simply45 Flush Cutter (Part No: ME-99-008).

## STEP 4



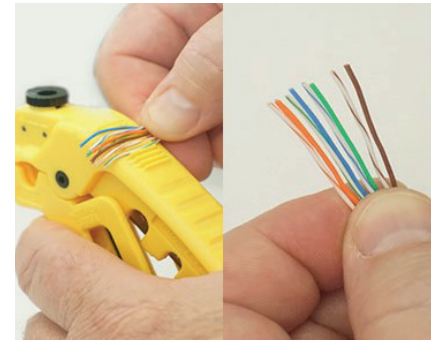
Trim center spline/pair separator as close to the cable jacket as possible without nicking any of the wire conductors.

## STEP 5



Separate each wire pair by untwisting.

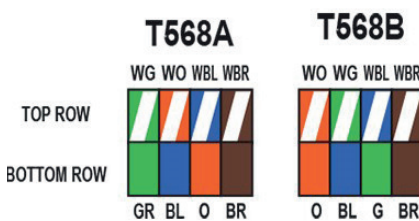
## STEP 6



Straighten each wire conductor.

Hint: Use wire straightening comb on top of Adjustable Stripper for faster straightening and less finger fatigue.

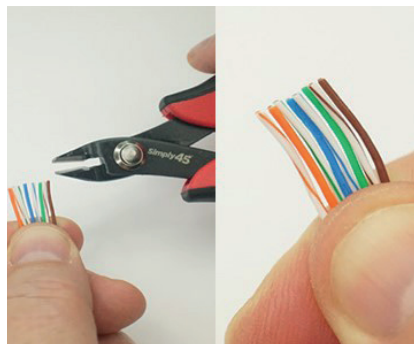
## STEP 7



Align wires according to Termination Pattern either Type A or Type B.

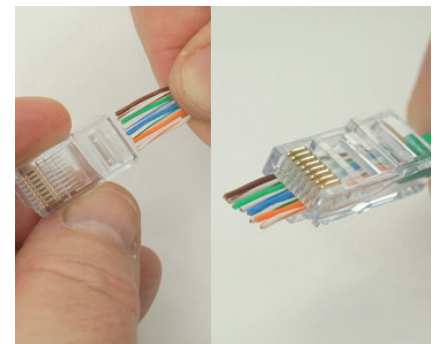
Hint: Hold wire so that the White Orange and Orange wires are closest to you and put in wire pattern order 1-8.

## STEP 8



Using a flush cutter, trim the wires straight across so all of the wires are the same length.

## STEP 9



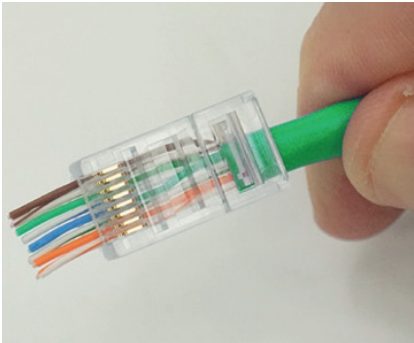
Hold the RJ45 plug upside down (strain relief clip facing down). Insert the wires into the back of the plug until they come out the front of the plug at least 1/2 inch (1.27cm).



# Termination Instructions

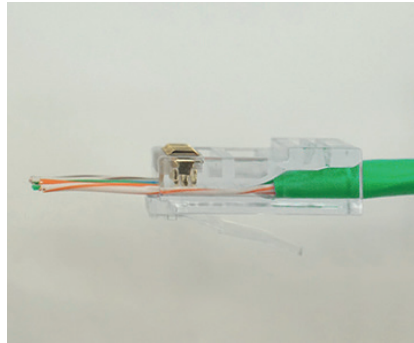
PN: FA-05-9005

## STEP 10



Make sure each wire is still in the correct pattern order.

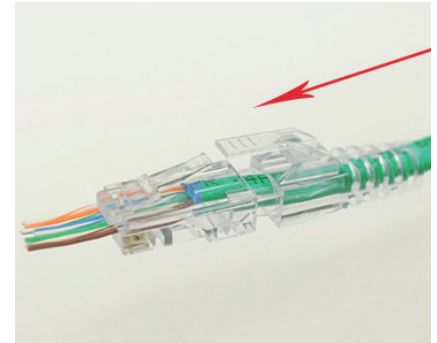
## STEP 11



Push the plug as far down onto the cable until it stops inside the plug.

Hint: Be sure cable goes in as far as possible to minimize the exposed untwisted wires inside the plug. Notice the wedge inside the plug stopping the cable.

## STEP 12



If using strain relief/boot, slide the boot up and into the back of the plug until the boot clip covers the top of the plug clip.

## STEP 13



Insert the plug into the crimping socket on the S45-C100/S45-C101 Simply45 pass-through crimping tool. (Part No: ME-99-008).

## STEP 14



Make sure plug goes completely inside the crimping socket.

## STEP 15



With one hand, firmly without stopping, compress the crimping handles all the way down in one steady non-stop motion.

## STEP 16



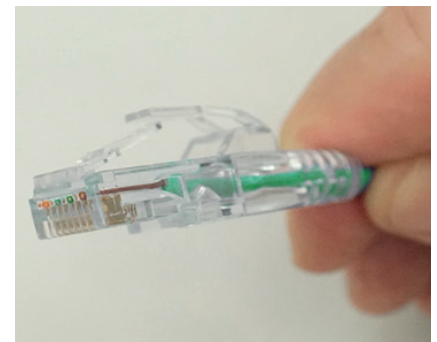
The Simply45 crimping tool is a ratcheted crimping tool. The crimping tool will not open up until the crimping process has been fully completed. This assures that the wire trims and pin sets have been done correctly.

## STEP 17



If the crimping handles do not release this means that you have not completed the crimping cycle. Simply squeeze the crimping handles further down until the crimping handles release.

## STEP 18



Then remove the terminated RJ45 plug from the crimping socket. Quickly inspect that all wires have been closely trimmed to the plug in the front.