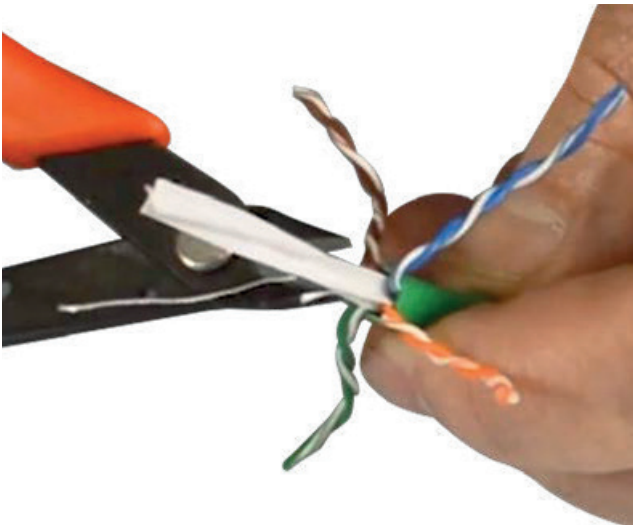




# Termination Instructions

PN: FA-02-9106

## STEP 1



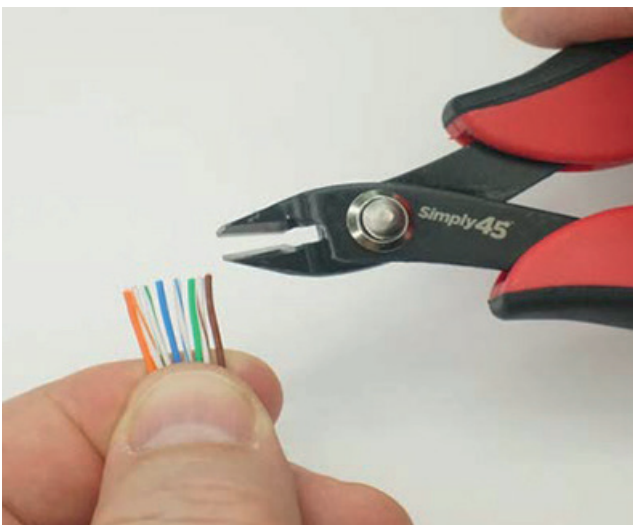
If using Cat6 UTP cable, trim center spline/pair separator as close to the cable jacket as possible without nicking any of the wire conductors.

## STEP 2

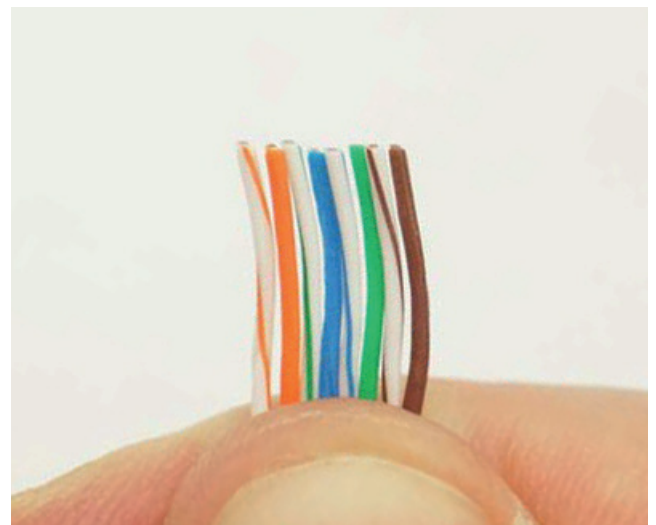


Make sure each wire conductor is straight. We recommend using the Simply45® Adjustable LAN Cable Stripper (Part No: MC-99-9950) that has a wire straightener comb on the top.

## STEP 3



Then straighten and align wires to correct alignment pattern (Type A or B). The B Pattern is most commonly used today. Using an angled flush cutter tool (such as Part No: ME-99-008), trim wire ends straight before inserting into the load bar.

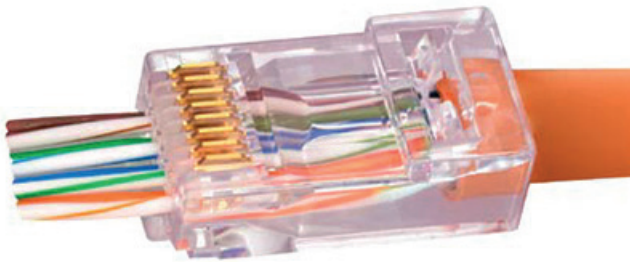




# Termination Instructions

PN: FA-02-9106

## STEP 4



The S45-1700P plug uses a Hi/Lo wire layout. Insert the pattern-aligned wires into the rear of the plug and push them out through the front of the plug. Then verify that the wires are still in the correct pattern alignment.

## STEP 5



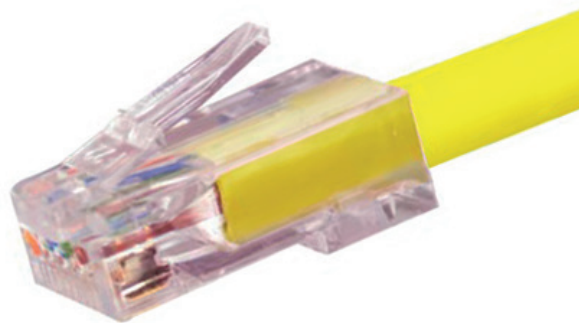
Insert the loaded plug into the crimping socket on the Simply45® crimp tool. Make sure plug is fully inserted.

## STEP 6



Firmly and in one quick and steady motion fully compress the crimper handles until it releases. The Simply45® crimpers are ratcheted. This means that the tool handles will not release until the full and complete crimping cycle has been completed.

## STEP 7



Inspect the terminated plug to be sure wires have been properly trimmed.