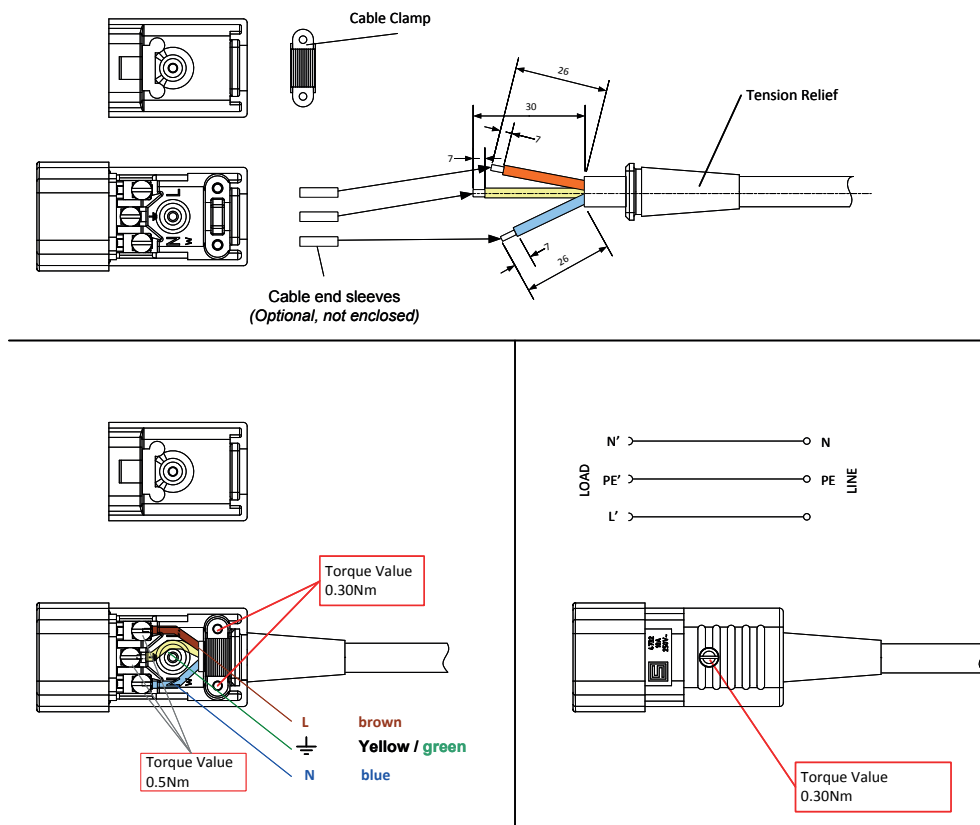




WIRING INSTRUCTION

Schurter 4732 C14 IEC Connector

Wiring Instruction



Assembly Instruction

Disconnect power before wiring.

Keep removed piece parts at a safe place to have them ready for reassembling.

- Loosen cover screw and remove cover.
- Loosen strain relief screws and remove strain relief.
- Insert cord into PVC-guard.
- Remove outer jacket on cord 30 mm. Make sure not to hurt insulation of single conductors.
- Cut the single wires into length as shown.
- Strip bare each copper conductor 7mm. Do not strip more than 10 mm.
- Loosen terminal screws but do not remove screws.
- Connect green or green/yellow (ground) wire to center clamp marked with ground symbol.
- Connect blue (white or light grey) wire to clamp marked „N“ (neutral).
- Connect brown (black / “hot”) wire to clamp marked „L“ (line).
- Tighten all wire clamp screws with a torque of 0.5 Nm.
- Insert shoulder of PVC-guard into cutout of base unit.
- Assemble strain relief bar over cut-off end of outer jacket of the cord and tighten strain relief screws with a torque of 0.3 Nm.
- Assemble cover unit and tighten cover screw with a torque of 0.3 Nm.

Warning: Failure to wire as instructed may cause personal injury or damage to device or equipment. To be installed or checked by an qualified person only. For factory assembly only.