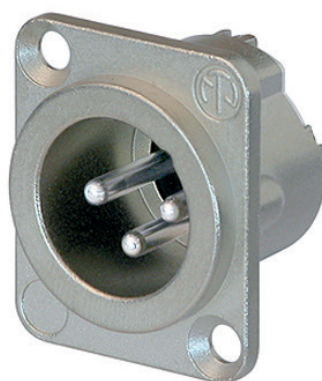




Product Data Sheet

Neutrik NC3MD-LX

Description



The Neutrik NC3MD-LX is a 3 pole male receptacle with solder cups, nickel housing and silver contacts.

The DLX series features a compact all metal housing with an ingenious duplex ground contact, which offers excellent RF protection and shielding. It is the ideal match for mating with Neutrik's EMC XLR cable connector.

Product	SKU
NEUTRIK NC3MD-LX	DA-65-0703

Key Benefits

- All metal housing offers best overall RF protection and electromagnetic shielding
- Duplex ground contact for excellent contact integrity between chassis and cable connector
- Male connector's retention bar replaces plastic design with all metal version improving pull-out force
- Larger solder contacts for easier termination
- Optional connection to easily join pin1 to chassis ground
- D-style housing provides installation compatibility with industry standard D mounting dimensions



Product Data Sheet

Neutrik NC3MD-LX

Technical Specification

Neutrik NC3MD-LX Specification

Connection type: XLR	Mechanical
Gender: male	Insertion force: ≤ 20 N
Electrical	Withdrawal force: ≤ 20 N
Capacitance between contacts: ≤ 4 pF	Lifetime: > 1000 mating cycles
Contact resistance: ≤ 5 m Ω	Wiresize: max. 2.5 mm ² , 14 AWG
Dielectric strength: 1.5 kVdc	Wiring: Solder contacts
Insulation resistance: > 10 G Ω (initial)	Locking device: Latch lock
Rated current per contact: 16 A	Chassis shape: D
Rated voltage: < 50 V	Material
Environmental	Contact plating: 2 μ m Ag over 2 μ m Ni
Flammability: UL 94 V-0	Contacts: Brass (CuZn35Pb2)
Standard compliance: IEC 61076-2-103	Insert: Polyamide (PA66)
Protection class: IP 40	Locking element: Steel Ck67
Solderability: Complies with IEC 68-2-20	Shell: Zinc diecast (ZnAl4Cu1)
Temperature range: -30 °C to +80 °C	Shell plating: Nickel