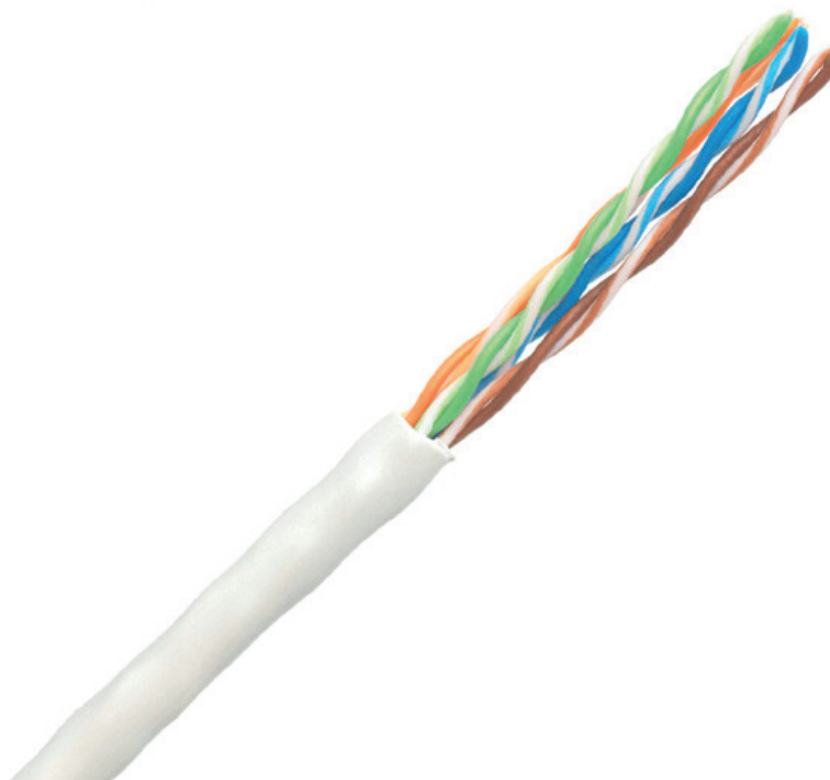




Product Data Sheet

Belden CAT 5E Solid UTP LSOH 305M

Description



The Belden 1583ENH is a 100 MHz category 5E cable suitable for use in a series of category 5E applications. Available in violet and grey, its LSOH jacket will emit no halogen and limited smoke upon exposure to extremes of heat, making it ideal for indoor use.

As a horizontal and building backbone cable, it works well in 1000Base-T (Gigabit Ethernet), 100 Base-T, 10 Base-T, FDDI and ATM systems. Alongside being very easy to install, its distinctive colours also enable quick identification.

Developed to the very highest industry standards, the Belden 1583ENH is available from Argosy in lengths of 305 metres.

Product	SKU
BELDEN CAT 5E SOLID UTP LSOH 305M - VIOLET	EA-07-5113AV
BELDEN CAT 5E SOLID UTP LSOH 305M - GREY	EA-08-5113



Product Data Sheet

Belden CAT 5E Solid UTP LSOH 305M

Technical Specification

Belden CAT 5E Solid UTP LSOH 305M Specification

Conductor	High Frequency	
Element: Individual Pair	Frequency [MHz]	Max. Insertion Loss (Attenuation)
Size: 24	1	2.1 dB/100m
Stranding: Solid	4	4 dB/100m
Material: BC - Bare Copper	10	6.3 dB/100m
Number of Pairs: 4	16	8 dB/100m
Insulation	20	9 dB/100m
Element: Individual Pair	31.25	11.4 dB/100m
Material: PE - Polyethylene	62.5	16.5 dB/100m
Nom. Insulation Diameter: 0.9 mm (0.035 in)	100	21.3 dB/100m
Colour Code: White/Blue & Blue, White/Green & Green, White/Orange & Orange, White/Brown & Brown	Voltage	
Outer Jacket	Voltage Rating: 72 V DC	
Material: LSZH - Low Smoke Zero Halogen (Flame Retardant)	Temperature	
Nom. Diameter: 4.6 mm (0.18 in)	Operating: -30°C To +60°C	
Electricals	Installation: 0°C To +50°C	
Max. Conductor DCR: 95 Ohm/km (29 Ohm/1000ft)	Bend Radius	
Max. Mutual Capacitance: 56 pF/m (17 pF/ft)	Installation Min.: 40 mm (1.6 in)	
Max. Capacitance Unbalance: 160 pF/100m	Max. Pull Tension: 65 N (15 lbf)	
Nom. Characteristic Impedance: 100 Ohm	Bulk Cable Weight: 28 kg/km (19 lbs/1000ft)	
Delay		
Max. Delay Skew: 40 ns/100m		
Nom. Velocity of Prop.: 70%		



Product Data Sheet

Belden CAT 5E Solid UTP LSOH 305M

Standards and Compliance

Belden CAT 5E Solid UTP LSOH 305M

Environmental Suitability: Indoor - Euroclass Dca

Data Category: Category 5e

Flammability / Reaction to Fire: IEC 60332-1-2

ISO/IEC Compliance: ISO/IEC 11801-1, IEC 61156-5, IEC 60754-1, IEC 60754-2, IEC 61034-2

CPR Compliance: CPR Euroclass: Dca-s2,d2,a1

GENELEC Compliance: EN 50173-1, Segregation class according EN50174-2 = a

IEEE Compliance: PoE: IEEE 802.3bt Type 1, Type 2, Type 3

UK Regulation Compliance: UKCA Mark