



Handling Instructions

Neutrik FOCD-STM (MTP)



CAUTION: Laser radiation, do not look directly into beam of light!

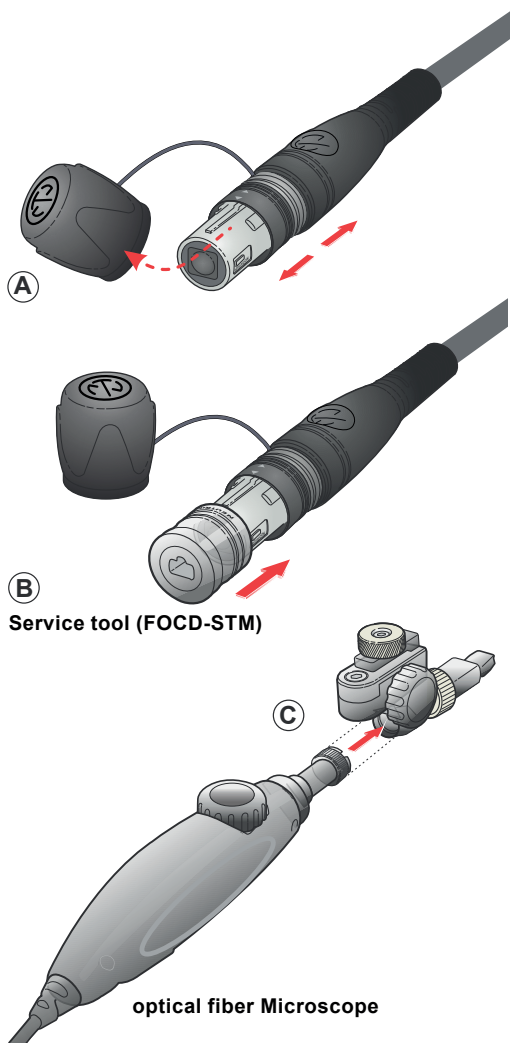
The sealing shutter mechanism of the opticalCON® avoids contamination of the MTP® ferrule locked inside. The dust-proof design reduces maintenance intervals to a minimum; if nevertheless necessary, follows the maintenance procedure below to avoid damages on the due to inproper cleaning.

A. Connector Cleaning / Inspection

Intervall: every 500 matings recommended

Tools:

- NEUTRIK® MTP® service Tool (FOCD-STM)
- Dry Cleaner MPO/MTP® (FOCD-DCM)
- optical fiber video probe

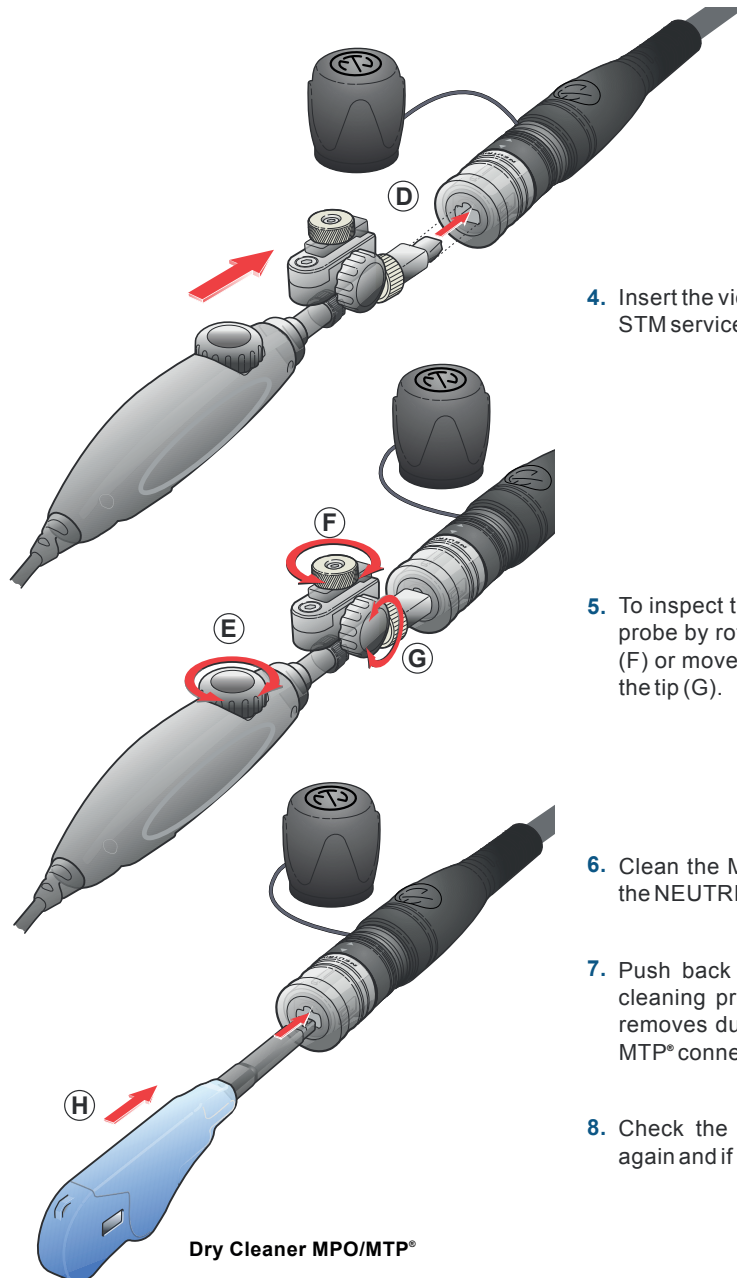


1. Disconnect both cable ends for safety reasons. Invisible laser radiation may be emitted from disconnected fibers or connectors. Do not stare into beams or view directly with optical instruments.
2. Remove dust cap from the connector (A) and mount NEUTRIK FOCD-STM inspection tool on it until it is locked (B).
3. Prepare the optical fiber video probe with the correlate singlemode or multimode tip (C). Under the following QR-code you can find a list with appropriate video probs and tips.



Handling Instructions

Neutrik FOCD-STM (MTP)



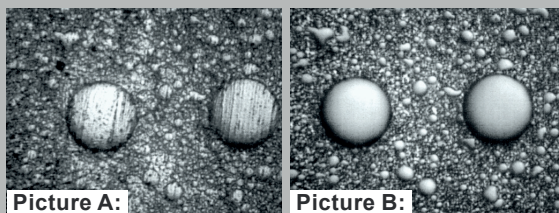
4. Insert the video probe tool into our NEUTRIK FOCD-STM service tool (D).

5. To inspect the MTP® ferrule surface focus the video probe by rotating the focus wheel (E) and to switch (F) or move to the next ferrule rotate the wheels on the tip (G).

6. Clean the MTP® surface with the Dry Cleaner over the NEUTRIK MTP® service tool.

7. Push back and forth the dry cleaner to start the cleaning procedure (H). An endless lint free tape removes dust particle on the ferrule surface of the MTP® connector.

8. Check the condition of the MTP® ferrule surface again and if necessary repeat step 7.

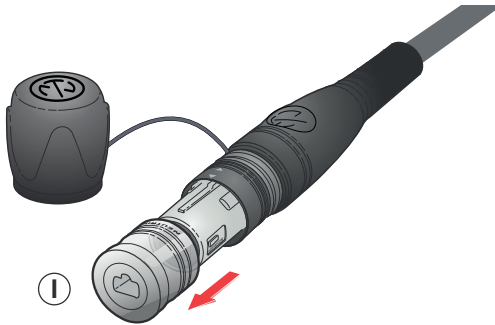


During inspection procedure, make sure that each ferrule is completely free of dust. As a reference the ferrule has to look as illustrated on Picture B.



Handling Instructions

Neutrik FOCD-STM (MTP)



9. After the cleaning procedure unlock the NEUTRIK inspection tool (I).