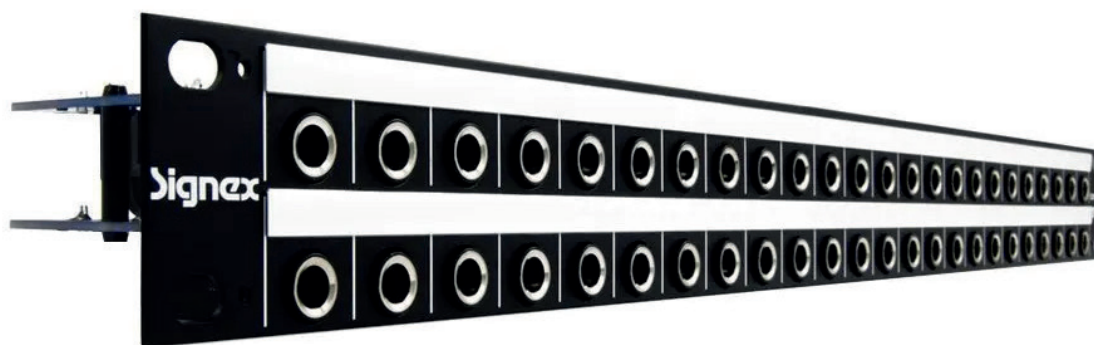




# Product Data Sheet

## Signex Isopatch 1U 2 x 24 Way A-Gauge Audio Jackfield

### Description



The classic 1U patch panel design with ¼" TRS Jacks allowing instruments to be plugged directly into the patchbay. With two rows of 24 sockets, Half and Full normalling on all channels and a choice of rear connectors, the Isopatch is one of the most versatile patch panels available. A neat slide-in labeling system tops off a design that's good looking, durable and easy to use.

At the front, the fully-enclosed connector design helps to keep out the contaminants that shorten contact life. A smart nickel-plated ring gives an improved 'feel' when plugging/unplugging and our neat slide-in labeling system makes designation of signals easy and neat. All in all, one of the coolest looking patch panels you'll see in any studio!

Product	SKU
SIGNEX ISOPATCH 1U 2 X 24 WAY A-GAUGE AUDIO JACKFIELD WITH <b>SILVER CONTACTS</b> AND <b>REAR D-SUB BLACK</b>	106048
SIGNEX ISOPATCH 1U 2 X 24 WAY A-GAUGE AUDIO JACKFIELD WITH <b>GOLD CONTACTS</b> AND <b>REAR D-SUB BLACK</b>	106049
SIGNEX ISOPATCH 1U 2 X 24 WAY A-GAUGE AUDIO JACKFIELD WITH <b>SILVER CONTACTS</b> AND <b>REAR JACKS BLACK</b>	106050
SIGNEX ISOPATCH 1U 2 X 24 WAY A-GAUGE AUDIO JACKFIELD WITH <b>GOLD CONTACTS</b> AND <b>REAR JACKS BLACK</b>	106051
SIGNEX ISOPATCH 1U 2 X 24 WAY A-GAUGE AUDIO JACKFIELD WITH <b>SILVER CONTACTS</b> AND <b>REAR RCA BLACK</b>	106052
SIGNEX ISOPATCH 1U 2 X 24 WAY A-GAUGE AUDIO JACKFIELD WITH <b>GOLD CONTACTS</b> AND <b>REAR RCA BLACK</b>	106053
SIGNEX ISOPATCH 1U 2 X 24 WAY A-GAUGE AUDIO JACKFIELD WITH <b>SILVER CONTACTS</b> AND <b>REAR SOLDER BLACK</b>	106054
SIGNEX ISOPATCH 1U 2 X 24 WAY A-GAUGE AUDIO JACKFIELD WITH <b>GOLD CONTACTS</b> AND <b>REAR SOLDER BLACK</b>	106055



# Product Data Sheet

## Signex Isopatch 1U 2 x 24 Way A-Gauge Audio Jackfield

### Key Benefits

- Two rows of 24 type A Jacks in 1U of rack space
- New enclosed Jack design keeps out dust and dirt
- Jack, RCA phono or direct solder rear connections
- Half and full normalising available on all channels
- Suitable for balanced/unbalanced and stereo signals
- Lacing Bar Kit available for extra rear cable support
- Neat and easy slide-in strips for socket designation
- Suitable for insert points without special leads
- Gold contact versions also available
- PCB parallel points for every Jack

### Features

#### Lateral board design

The Isopatch has all its connectors mounted on two horizontal printed circuit boards (PCBs). This type of design not only eliminates most of the wiring, but also adds rigidity so there's no flexing of the panel in use. Flexible jumper cables carry normalised signals between top and bottom boards and allow access for servicing if needed.

#### Flexible normalling

The Isopatch is supplied with all sockets isolated, but Half or Full normalling is available on every channel by simply soldering

across special 'program pads' on the top PCB – No special tools are needed and there's nothing to take apart. In fact, if the Isopatch is already installed, you don't even have to unplug the rear connectors – Just a few blobs of solder and it's done.

#### Contact and rear termination options

The Isopatch can be used for most types of audio signal including mono, stereo, balanced and unbalanced lines. The standard version comes with silver-plated contacts, but gold-plated versions are also available. Rear connections are via board-mounted D-sub, Jack, or direct solder termination.

### Technical Specification

#### Signex Isopatch 1U 2 x 24 Way A-Gauge Audio Jackfield Spec

<b>Connections:</b> 48 Way	<b>Switch Contact Resistance:</b> <30mΩ
<b>Front Sockets:</b> 6.4mm Jack (1/4" Type A)	<b>Switch Contact Life:</b> >10,000 operations
<b>Front Socket Contacts:</b> Silver plated phosphor-bronze, Gold plated phosphor-bronze	<b>Rack Unit Size:</b> 1U Space / 19" Wide
<b>Normalising:</b> Half and full normalising programmable on every channel	<b>Dimensions:</b> D-Sub - W483 x H45 x D72 mm, Jacks - W483 x H45 x D81 mm, RCA - W483 x H45 x D71 mm, Solder - W483 x H45 x D70 mm
<b>Rear Termination:</b> Rear 25-way D-Sub Female, 1/4" type A Jack sockets, RCA phono sockets, Direct solder terminations	<b>Net Weight:</b> Rear D-Sub 0.93kg, Jacks 0.97kg, RCA 0.89kg, Solder 0.78kg

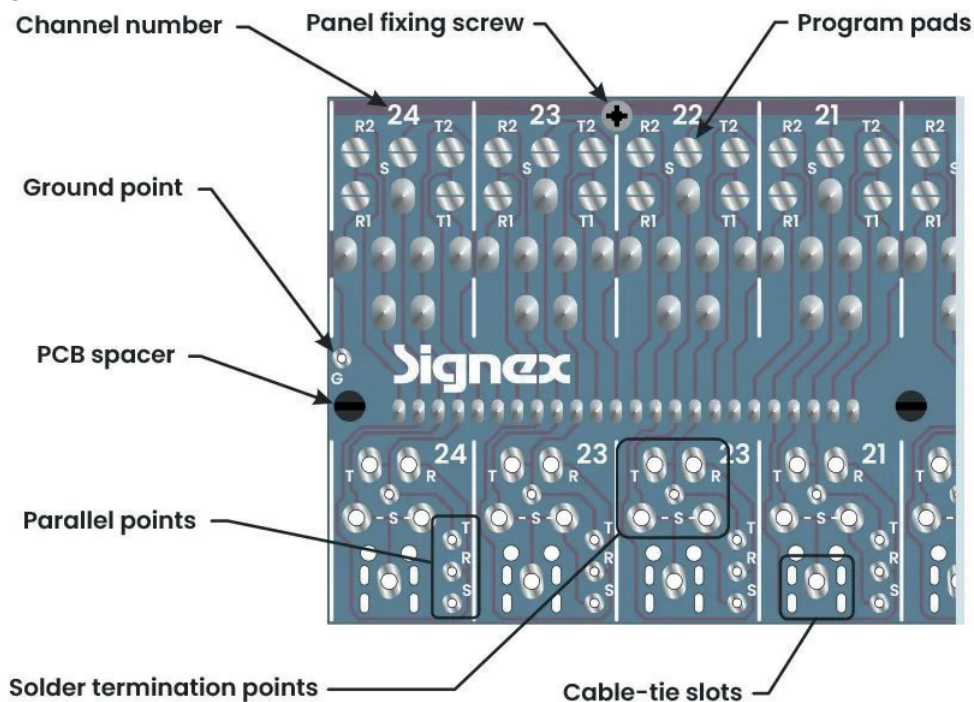


# Product Data Sheet

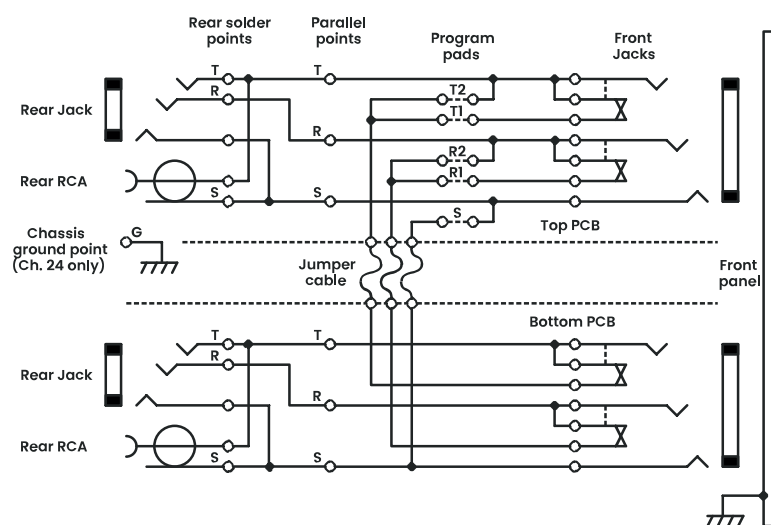
## Signex Isopatch 1U 2 x 24 Way A-Gauge Audio Jackfield

### Technical Drawings

#### PCB Layout



#### Circuit Diagram



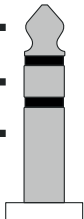
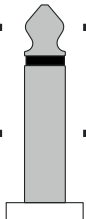
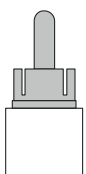


# Product Data Sheet

Signex Isopatch 1U 2 x 24 Way A-Gauge Audio Jackfield

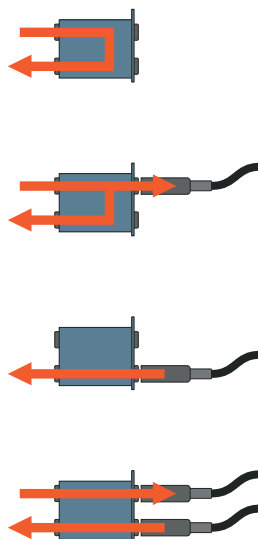
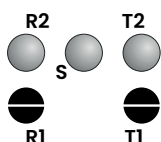
## Technical Drawings

Compatible with most types of audio

Signal Type	Tip	Ring	Sleeve			
Mono (Unbalanced)	Signal		Ground			
Mono (Balanced)	+ (Hot)	- (Cold)	Ground	<b>3 Pole Jack</b>	<b>2 Pole Jack</b>	<b>RCA Phono</b>
Stereo (Unbalanced) *	Left	Right	Ground	<p>* Left and right channel wiring may be reversed. Stereo signals are normally wired to separate Jacks for greater flexibility.</p> <p>Note: Screen is always ground</p>		
Digital (SPDIF)	Signal		Ground			
Digital (AES/EBU)	+ (Hot)	- (Cold)	Ground			

Full or half normalling on every channel

Half normal



Full normal

